

Beacon City Estate

● ● ● illuminating the part to extraordinary Living



WHERE DREAMS
BECOMES A REALITY
& YOUR IDEAL DESTINATION
FOR LUXURY LIVING



SCAN ME



AIRPORT ROAD, ABUJA





About Us

Zeeks-Homes limited is a subsidiary of Zeeks groups. At ZeeksHomes, we are dedicated to creating premium real estate developments that offer unparalleled quality and value. Our latest project, Beacon City Estate, is designed to provide an exclusive lifestyle experience with modern amenities and meticulously planned infrastructure.



www.zeekshomes.ng



ZEEKS HOMES

ZEEKS HOMES, a distinguished subsidiary of the renowned Zeeks Group of Companies, stands as a beacon of excellence in the realm of real estate innovation. With an unwavering commitment to superior quality, sustainability, and investors satisfaction, we epitomize the pinnacle of professionalism and expertise in the industry. Guided by a rich legacy of success and propelled by a forward-thinking vision, we are dedicated to reshaping urban landscapes and enriching communities through our transformative developments.



MISSION STATEMENT

At Zeeks Homes, our mission is to redefine the standards of urban living by delivering exceptional real estate solutions that surpass every expectations, elevate lifestyles, and foster enduring value. Through a steadfast dedication to integrity, innovation, and sustainability, we aim to create environments that inspire, enrich, and endure for generations to come.

Our Core Values

Excellence



We uphold the highest standards of excellence in all facets of our operations, from project conception to execution, setting benchmarks craftsmanship.

Integrity



Integrity is the cornerstone of our business ethos. We conduct ourselves with honesty, transparency, and accountability, fostering trust and confidence among our stakeholders.

Innovation



We embrace innovation as a catalyst for progress, continually pushing boundaries and exploring new frontiers in design, technology, and sustainability.

Sustainability



Zeeks homes is Committed to environmental stewardship, we integrate sustainable practices into every aspect of our developments, minimizing ecological impact and promoting a greener future.

Collaboration



Collaboration is central to our approach. We cultivate synergistic partnerships with stakeholders, and communities, fostering a culture of team and mutual respect.



Why Choose Us

Welcome to Zeeks homes limited. Here's why we're your best choice:



Expertise:

With over 5 years of industry experience, we deliver exceptional, high-quality projects.



Customer Focus:

We prioritize your needs, ensuring personalized service and tailored solutions.



Innovation:

Our projects use cutting-edge technology for modern, sustainable developments.



Quality:

We partner with top professionals to guarantee superior craftsmanship and durability.



Integrity:
Transparent
and honest
communication
builds trust and
confidence in our
work.



**Comprehensive
Services:**
From start to
finish, we handle
every aspect of our
project seamlessly.



Community Impact:
Our developments
enhance
communities,
providing lasting
positive impacts.

Choose Zeeks homes limited for a reliable, innovative, and client-focused real estate development experience.

Project Overview



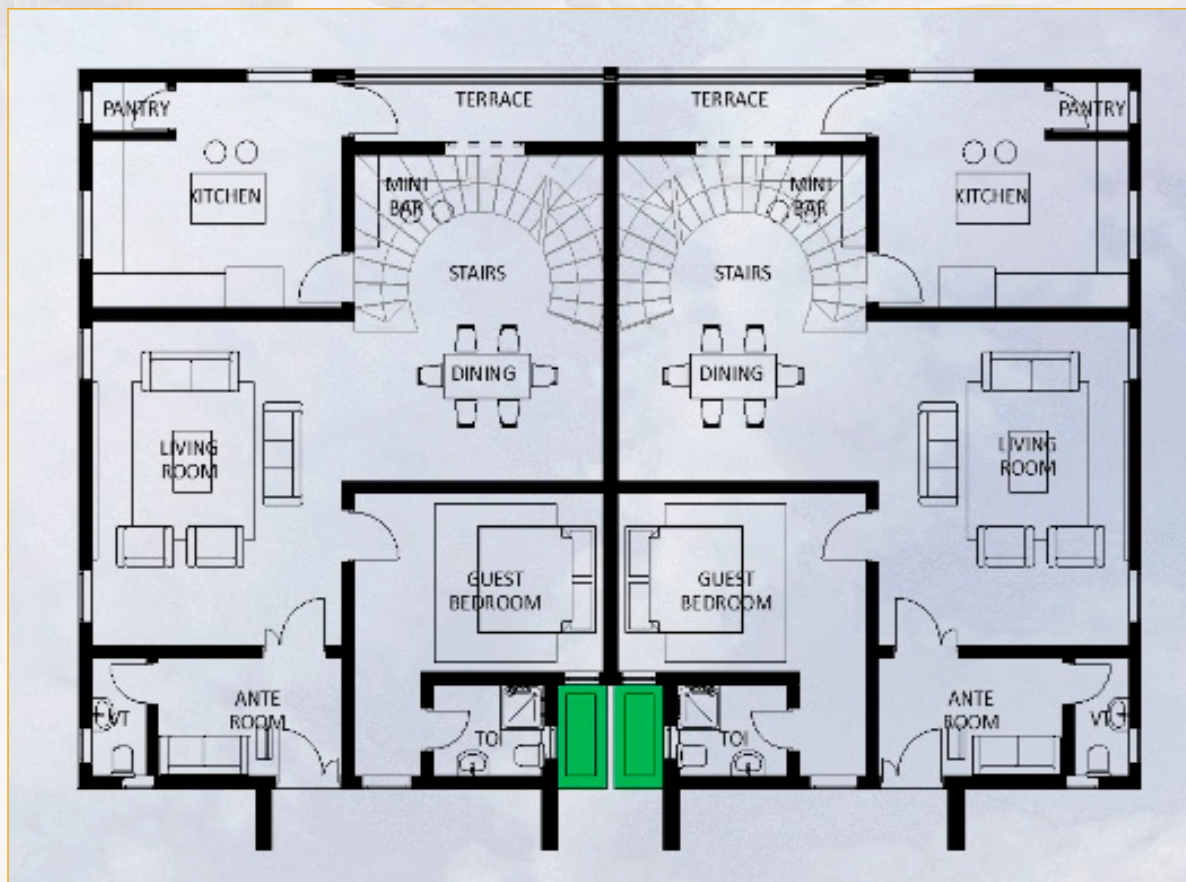
Beacon City Estate is an upscale residential community that embodies elegance, comfort, and convenience. Nestled in a serene environment, this estate offers a perfect blend of urban sophistication and natural beauty. Whether you're looking for a family home or an investment opportunity, Beacon City Estate is the perfect choice.



Illuminating the path to extraordinary Living

Semi-Detached Duplex

FLOOR PLAN & 3D VIEW



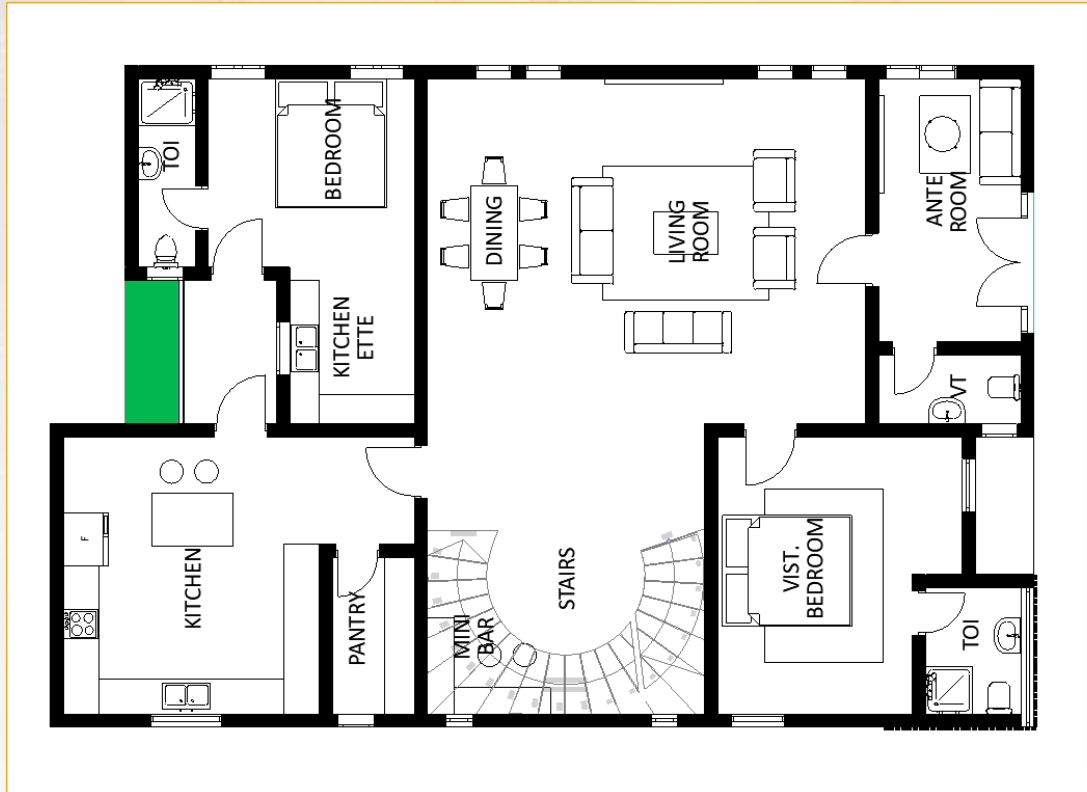
Fully-Detached Duplex

3D VIEW

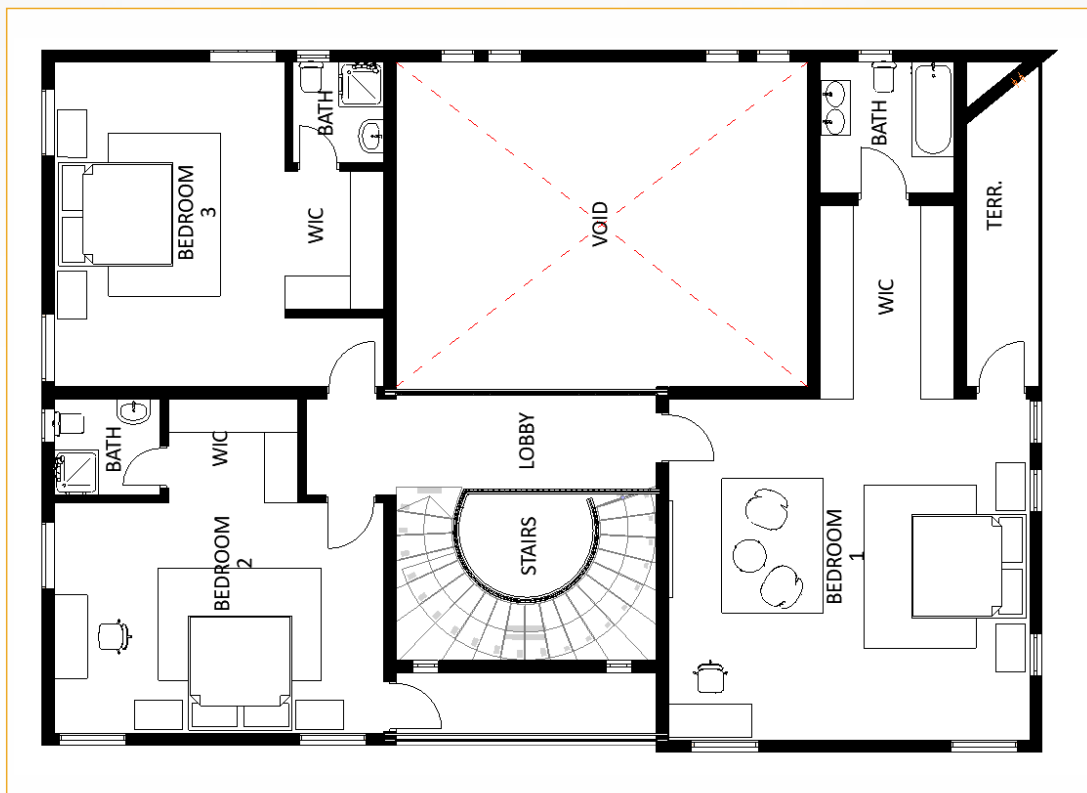


Fully-Detached Duplex

GROUND FLOOR PLAN



GROUND FLOOR PLAN



Estate Features



Gated Community

- Gated Community: Ensuring safety and privacy for all residents.



24/7 Security

- 24/7 Security: Professional security personnel and advanced surveillance systems.



Paved Roads

- Paved Roads and Walkways: Well-maintained and beautifully designed.



Green Spaces and Parks

- Green Spaces and Parks: Lush, landscaped gardens and recreational areas.



Recreational Facilities

- Sports and Recreational Facilities: basketball courts, and playgrounds.



Fitness facility

- Health and Wellness Centre: fitness facility.



Electricity Supply

- Electricity Supply: Stable power supply



Estate Facilities

GYMNASIUM & POOL ARENA



MINI MART



Where dreams become reality and your ideal destination for **Luxury Living**



Land Types and Prices

- 300 sqm Plot: Ideal for a single-family home - a 3 bedroom Semi detached duplex .



₦5million

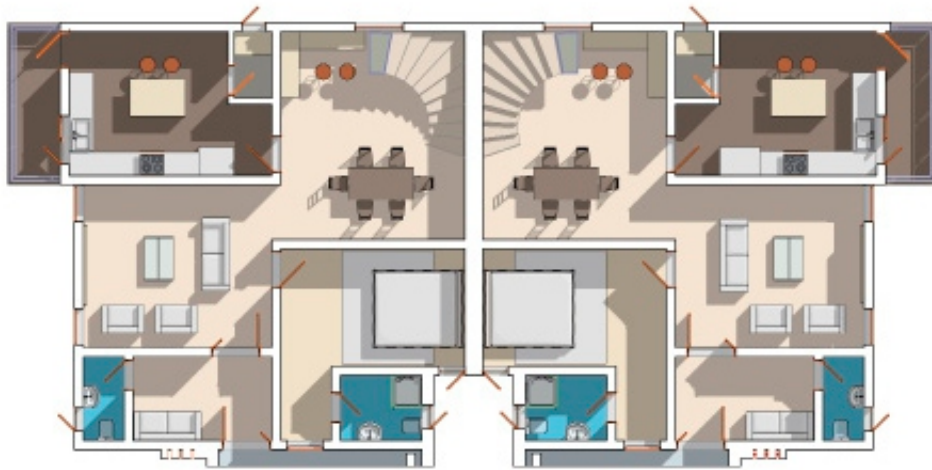


Payment Plan

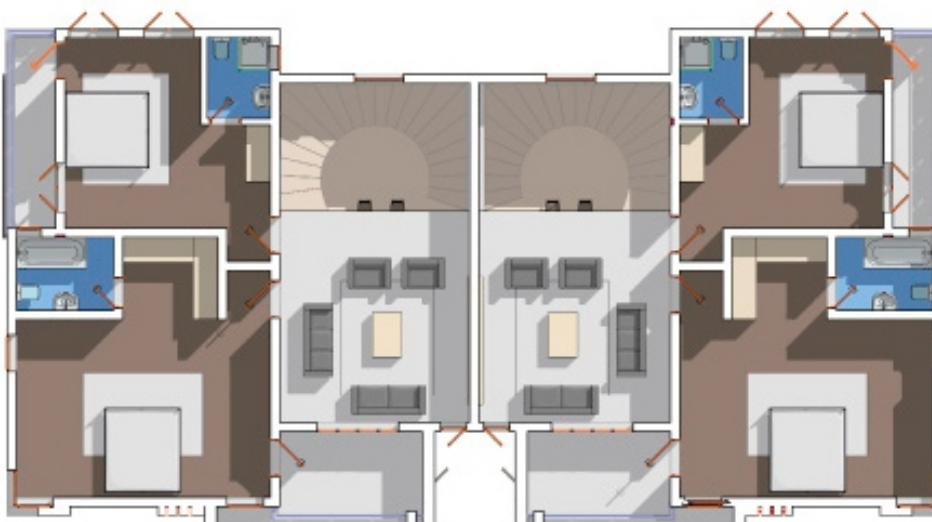
- 300sqm Estate Land- **N5,000,000**
- 3bedroom semi detached duplex

MONTH	AMOUNT	INITIAL DEPOSIT	BALANCE	MONTH 1	MONTH 2	MONTH 3	MONTH 4	MONTH 5	MONTH 6
Outright payment	5,000,000	5,000,000	N/A	N/A	N/A	N/A	N/A	N/A	N/A
3 Months	5,151,000	2,575,500 (50%)	2,575,500	858,500	858,500	858,500	N/A	N/A	N/A
6 Months	5,301,000	2,650,500 (50%)	2,650,500	441,750	441,750	441,750	441,750	441,750	441,750

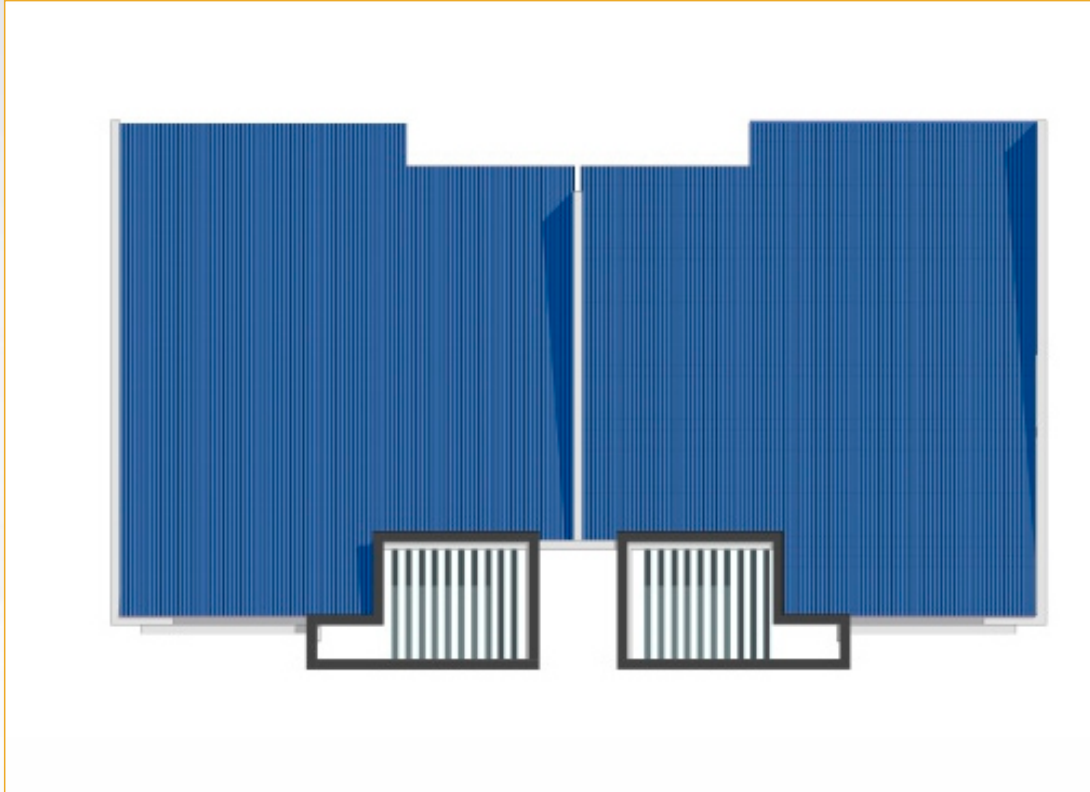
GROUND FLOOR PLAN



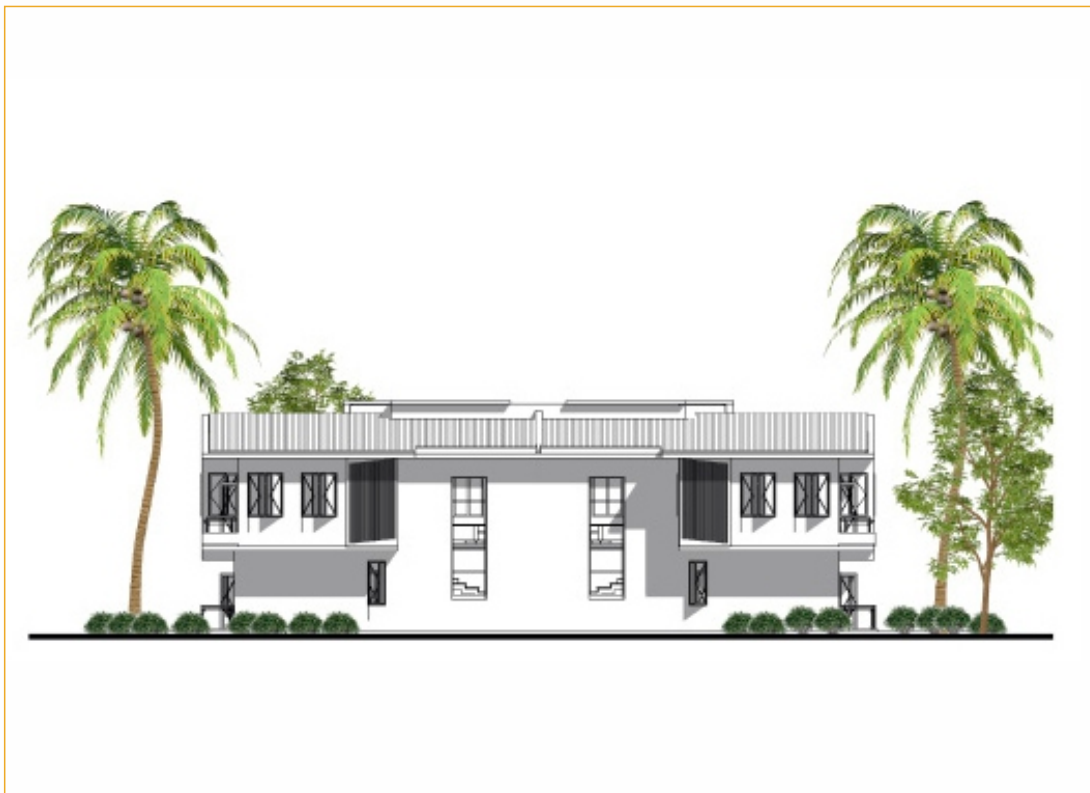
FIRST FLOOR PLAN



ROOF PLAN



NORTH ELEVATION



→ 500 sqm Plot: Perfect for larger homes with spacious yards, a 5 bedroom fully detached duplex



₦8million



Payment Plan

- 500sqm Estate Land- **8,000,000**
- 4bedroom fully detached duplex with an inbuilt BQ

MONTH	AMOUNT	INITIAL DEPOSIT	BALANCE	MONTH 1	MONTH 2	MONTH 3	MONTH 4	MONTH 5	MONTH 6
Outright payment	8,000,000	8,000,000	N/A	N/A	N/A	N/A	N/A	N/A	N/A
3 Months	8,241,000	4,120,500 (50%)	4,120,500	1,373,500	1,373,500	1,373,500	N/A	N/A	N/A
6 Months	8,481,000	4,240,500 (50%)	4,240,000	706,750	706,750	706,750	706,750	706,750	706,750



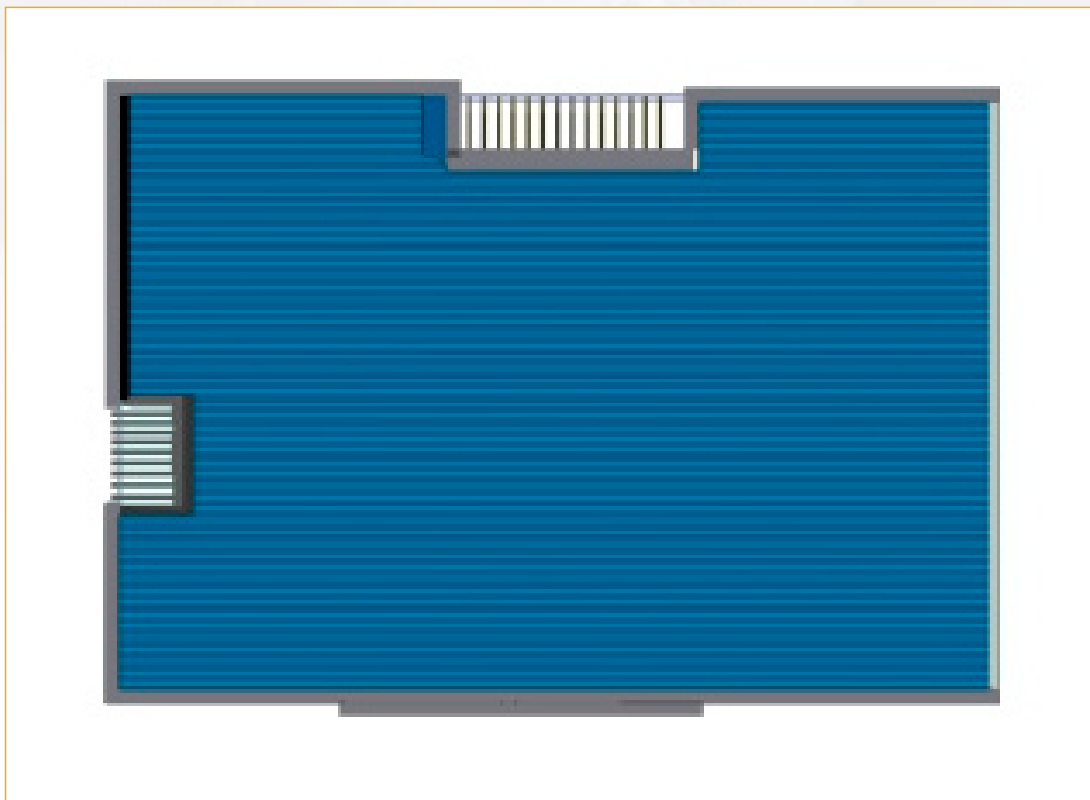
GROUND FLOOR PLAN



FIRST FLOOR PLAN



ROOF PLAN



Investment Benefits



Prime Location:

Strategically located with easy access to major roads and amenities.

High Return on Investment:

Property values in this area are expected to appreciate significantly.

Flexible Payment Plans:

Affordable payment options to suit your financial plans.

Legal Documentation:

Secure and hassle-free process with all necessary documents provided.

Estate Layout

Mini- Estate



How to Buy



Visit Our Office

Get detailed information and view the site layout.

Choose Your Plot:

Select from available plots based on your preference and budget.

Payment Plan:

Choose a suitable payment option and make an initial deposit.

Secure Your Plot:

Complete the payment process and receive your allocation documents.

Build Your Dream Home:

Begin construction as per approved guidelines.



Illuminating the path to extraordinary Living

Experience the Future
of Living at Beacon City
Estate

Secure your piece of
paradise today and
join a community
that offers more than
just a place to live – it
provides a lifestyle of
luxury, comfort, and
convenience. Visit our
website or contact us to
learn more about how
you can become a proud
owner in Beacon City
Estate.



**New Keys,
New Beginnings**

Contact Us

📍 Office Address: Novare central office dabala Crescent Wuse zone 5 Abuja

📞 Phone Number: 09125555510 - 09125555512

✉️ sales@zeekshomes.ng | info@zeekshomes.ng

🌐 www.zeekshomes.ng

Follow us on our Social Media handles

📘 @zeekshomes.ng

✂️ @zeekshomes.ng

📷 @zeekshomes.ng



Illuminating the path to extraordinary living

Where dreams Become a Reality
and your Ideal Destination for
Luxury Living



SCAN ME